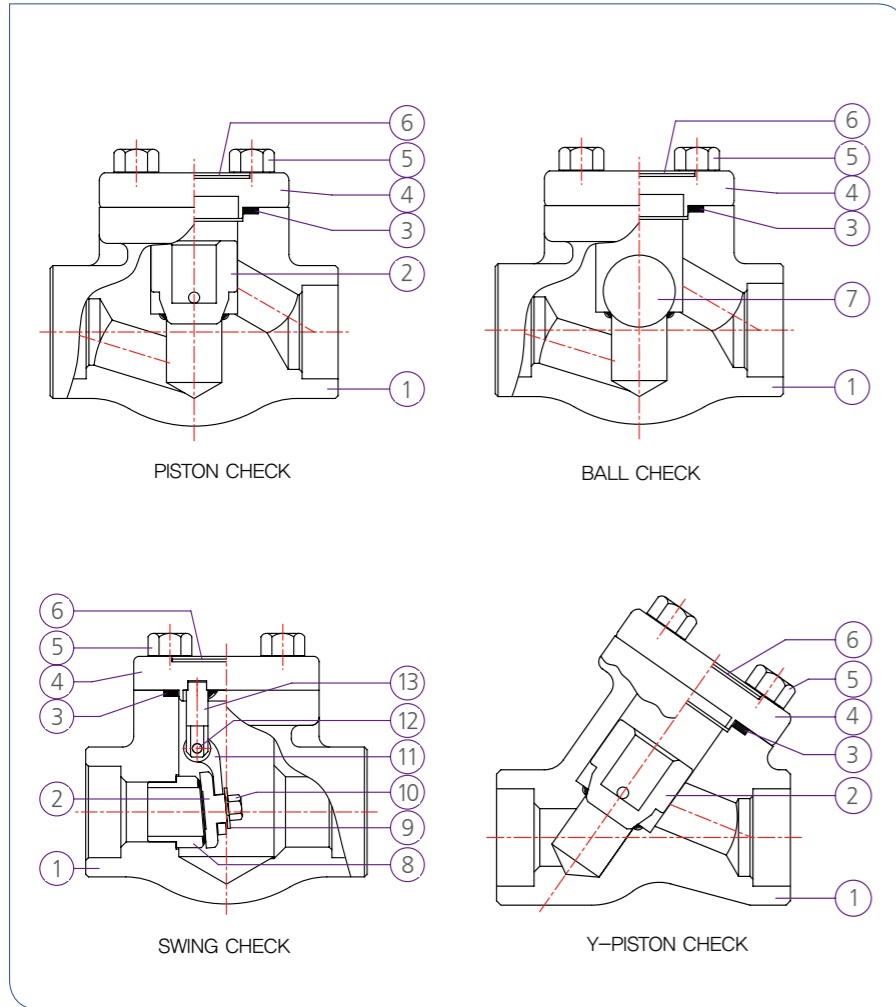


Typical Configurations for Check Values

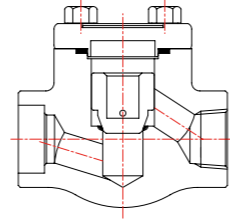
(Design Standard: API 602, BS 5352, ISO 15761, ASME B16.34)

Assembly for General Check Values



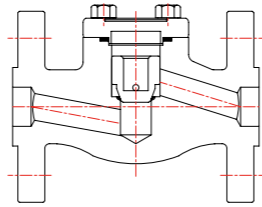
- 1. Body 4. Cover 7. Ball 10. Disc Nut 13. Support
- 2. Disc 5. Cover Bolt 8. Seat Ring 11. Hinge
- 3. Gasket 6. Nameplate 9. Disc Washer 12. Hinge Pin

SW, NPT Ends



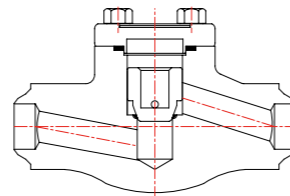
Socket Weld(SW) : ASME B16.11
Thread(NPT) : ASME B1.20.1

Flanged Ends



Flange(FLG) : ASME B16.5
Face-to-Face : ASME B16.10

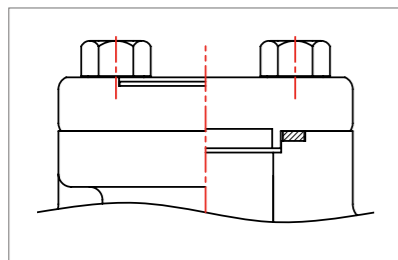
Long Pattern BW Ends



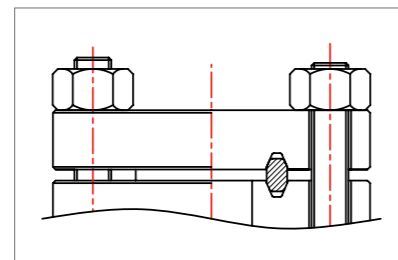
Butt Weld(BW) : ASME B16.25
End-to-End : ASME B16.10

Typical Configurations for Cover Joint

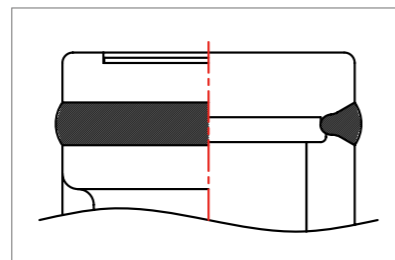
Bolted Cover (BC) (Spiral Wound Type)



Bolted Cover (BC) (Ring Type Joint)



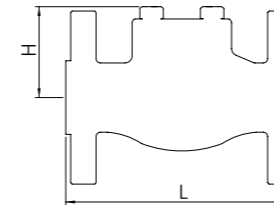
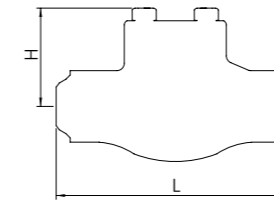
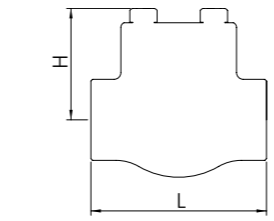
Welded Cover (WC) (Full Penetration Welding)



Value Dimensions - Check

SW, NPT, BW(L), FLG

Unit : mm, unless otherwise specified.



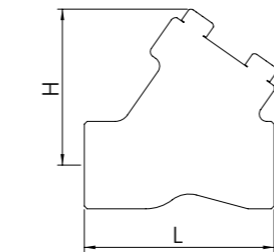
Symbol	Cover Joint	Class	RP	1/4	3/8,1/2	3/4	1	1-1/2	2	
			FP	1/4	3/8,1/2	3/4	1	1-1/2	2	
L (End-to-end)	All Type	800		76	76	92	104	140	183	220
		1500		92	92	104	140	183	210	
W (Handwheel)	All Type	800		6.4	9.5	12.7	17.5	29.5	36.0	44.0
		1500		6.4	9.5	12.7	16.0	25.0	27.0	
H (Height)	All Type	800		46	46	56	65	75	100	140
		1500		56	56	65	75	100	134	
Wt (kg)	All Type	800		1.0	1.0	1.5	2.0	4.1	7.1	10.0
		1500		1.5	1.5	2.5	4.1	6.4	9.8	

Symbol	Cover Joint	Class	1/2	3/4	1	1-1/2	2
			(DN15)	(DN20)	(DN25)	(DN40)	(DN50)
L (End-to-end)	All Type	150	108	117	127	165	203
		300	152	178	203	229	267
		600	165	190	216	241	292
		1500	216	229	254	305	368
P (Port Dia.)	All Type	150-600	9.5	12.7	17.5	29.5	36.0
		1500	9.5	12.7	16.0	25.0	27.0
H (Height)	All Type	150-600	46	56	65	75	100
		1500	56	65	75	100	134
Wt (kg) BW(Long) /FLG	All Type	150	1.2/2.3	1.7/2.8	2.3/4.1	4.6/7.8	7.7/11.0
		300	1.4/2.6	2.2/3.1	3.2/4.4	5.9/8.1	9.5/11.4
		600	1.5/3.1	2.3/4.3	3.4/5.8	6.1/11.0	10.3/14.8
		1500	2.6/4.2	4.2/6.1	6.9/9.4	10.5/14.4	16.8/24.2

※ Abbreviations
BC: Bolted Cover / WC: Welded Cover / RP: Reduced Port / FP: Full Port

SW, NPT, BW(L), FLG

Unit : mm, unless otherwise specified.



Symbol	Cover Joint	Class	RP	1/4	3/8,1/2	3/4	1	1-1/2	2	
			FP	1/4	3/8,1/2	3/4	1	1-1/2	2	
L (End-to-end)	All Type	800		76	76	90	102	124	152	200
		1500		90	90	102	124	152	200	
W (Handwheel)	All Type	800		6.4	9.5	12.7	17.5	29.5	36.0	44.0
		1500		6.4	9.5	12.7	16.0	25.0	27.0	
H (Height)	All Type	800		69	69	80	84	108	134	185
		1500		80	80	84	108	134	185	
Wt (kg)	All Type	800		1.0	1.0	1.6	2.2	4.2	7.0	9.8
		1500		1.7	1.7	2.4	4.5	7.2	10.2	

Symbol	Cover Joint	Class	1/2	3/4	1	1-1/2	2
			(DN15)	(DN20)	(DN25)	(DN40)	(DN50)
L (End-to-end)	All Type	150	140	152	165	203	229
		300	152	178	203	229	267
		600	165	190	216	241	292
		1500	216	229	254	305	368
P (Port Dia.)	All Type	150-600	9.5	12.7	17.5	29.5	36
		1500	9.5	12.7	16	25	27
H (Height)	All Type	150-600	69	80	84	108	134
		1500	80	84	108	134	185
Wt (kg)	All Type	150	1.4	2.2	3.1	6.2	10
		300	1.5	2.5	3.6	6.9	11.5
		600	1.6	2.6	3.8	7.2	12.5
		1500	3	4.2	7.8	13.2	18.4

※ ASME Class 900 is same as Class 1500.